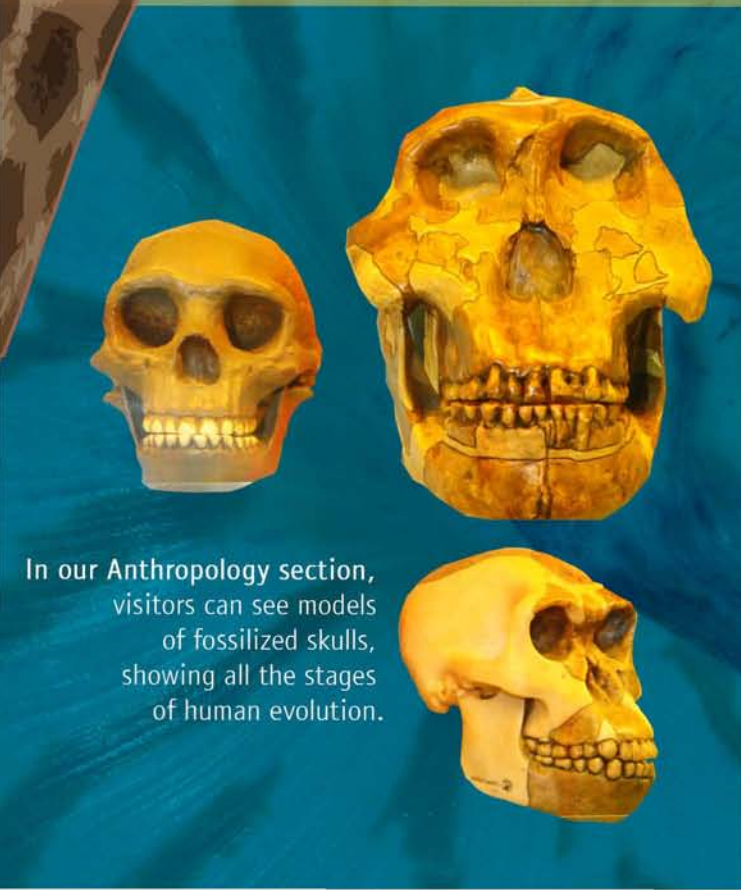




The Zoological Museum of the University of Athens was established around 160 years ago. From 1858 until the occupation, it was used by the public and especially by young people, as a centre for education and recreation. After the occupation, it closed for a time, reopening in 1991, intended mainly for schools. Today the museum is open to all and is constantly being modernised and enriched.

Our Giraffe is over 3 m in height.



In our Anthropology section, visitors can see models of fossilized skulls, showing all the stages of human evolution.



HELLENIC REPUBLIC  
National and Kapodistrian  
University of Athens  
EST. 1837



# MUSEUM of ZOOLOGY

NATIONAL AND KAPODISTRIAN UNIVERSITY OF ATHENS



## DEPARTMENT OF BIOLOGY PANEPISTIMIOUPOLI

### HOW TO FIND US

Access by car is via the main gate of the University Campus (Panepistimioupoli) on Oulof Palme Street.

### Week Days

Bus - 250, (Evangelismos-Panepistimioupoli), bus stop - Geology (Γεωλογία).

Bus - 608, (Galatsi-Zografou Cemetery). We are about 500 m walk from the terminus (Zografou Cemetery).

### Weekends & Holidays

The Museum is only open on certain weekends and holidays (see our announcements).

At weekends and on public holidays, the 250 bus does not operate.

The only available public transport is the 608 bus, (Galatsi-Zografou Cemetery). We are about 500 m walk from the terminus (Zografou Cemetery).

### CONTACT US

Address: Zoological Museum, Department of Biology, University of Athens, Panepistimioupoli, 157 84, Athens.

Telephone: 210 7274609, 210 7274376.

Fax: 210 7274619.

Website: <http://old.biol.uoa.gr/zoolmuseum/>

E-mail: [zoolmuse@biol.uoa.gr](mailto:zoolmuse@biol.uoa.gr), [facebook.com/ZoolMUA/](https://www.facebook.com/ZoolMUA/)

Opening Hours: 9:00-15:00.

(Group visits by prior arrangement.)

Usual Entrance Fee - 2 €.



Our exhibitions include many of the threatened animals found in Greece and throughout the world. Visitors can learn about the threats these species face, the status of their populations and about the IUCN threat categories.



Visitors can see exotic animals, as well as animals from Greece, at close quarters. They can admire the amazing diversity and beauty of animal life.



All the exhibits in our museum were donations. The specimens above, for example, were donated by the Papaliou family.



The invertebrate exhibitions reveal the amazing beauty and diversity of form that these animals possess, both on land and in the seas.



Our dioramas show the ecosystems of Greece and the rest of the world. Using smartphone technology (QR code), visitors can listen to animal noises, watch videos and access further information about the exhibits.



Our fish exhibition includes many marine and freshwater species. It contains some very unusual specimens.

**NO ANIMALS WERE INTENTIONALLY KILLED FOR OUR MUSEUM.**



The exciting and wonderful world of birds will fascinate and surprise you with its diversity.

The museum collections include:

- Around 500 small and large mammals from Greece, Europe and all of the other continents. These are in the form of preserved taxidermy mounts, or skeletons.
- A rich collection of around 2,500 birds, which include all Greek bird species.
- A collection of bird eggs and nests.
- A large collection of around 1,000 reptiles, amphibians & fish, both from Greece and from the rest of the world.
- Many large collections of invertebrates: insects & molluscs (snails, bivalves, cephalopods etc...), as well as a significant number of other specimens, including sponges, corals and crustaceans.



Young visitors will become familiar with many threatened animals, such as sea turtles.



The elk (*Alces alces*) in our museum is the largest example of the species to be seen in any museum in Europe.